

# **ACM 15<sup>th</sup> International Workshop On Data Warehousing and OLAP - DOLAP 2012 -**



**Maui, Hawaii, USA**  
**November 2<sup>nd</sup>, 2012**



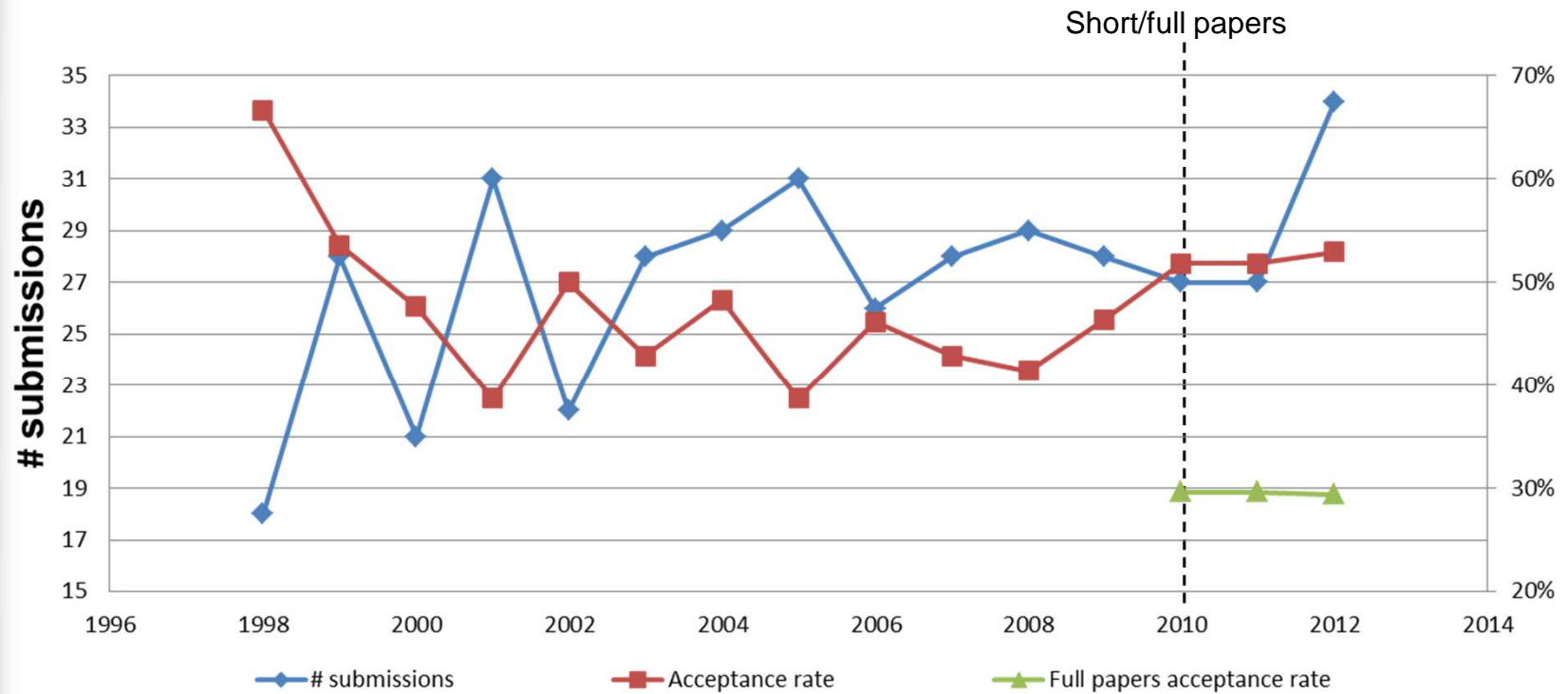
# DOLAP 2012 facts

- 33 submitted papers and 18 accepted (54% acceptance rate)
  - 10 full papers (30% acceptance rate)
  - 8 short papers (24% acceptance rate)

Region	Author	Submitted	Accepted	Accept. rate
Africa	7	2.17	0.5	23%
Asia	3	1	1	100%
Australia	-	-	-	-
Europe	63	22.75	12.16	53%
N. America	16	6.33	4.33	68%
S. America	3	0.75	0	0%

- Submissions come from 4 regions and 17 different countries
  - 27 authors are from France
- Each paper received at least 3 reviews

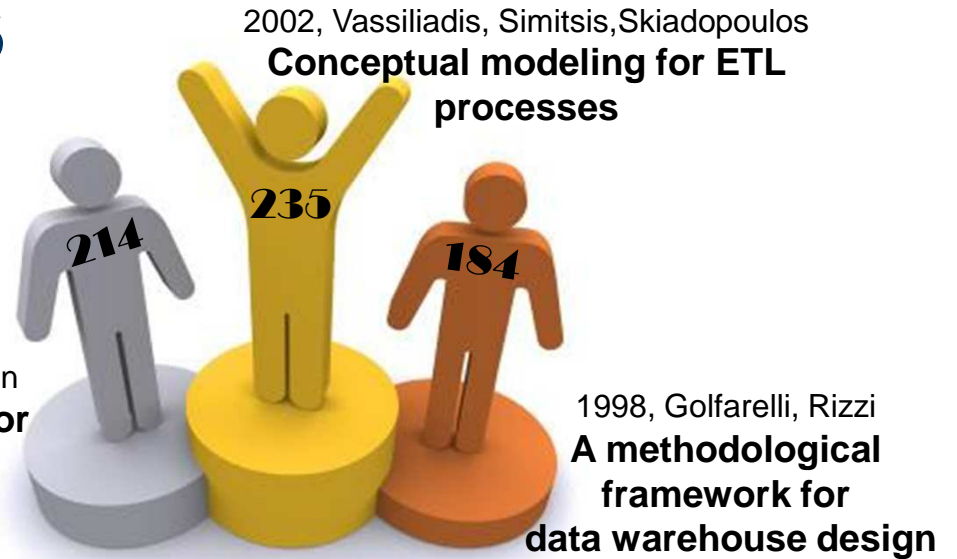
# DOLAP Trends



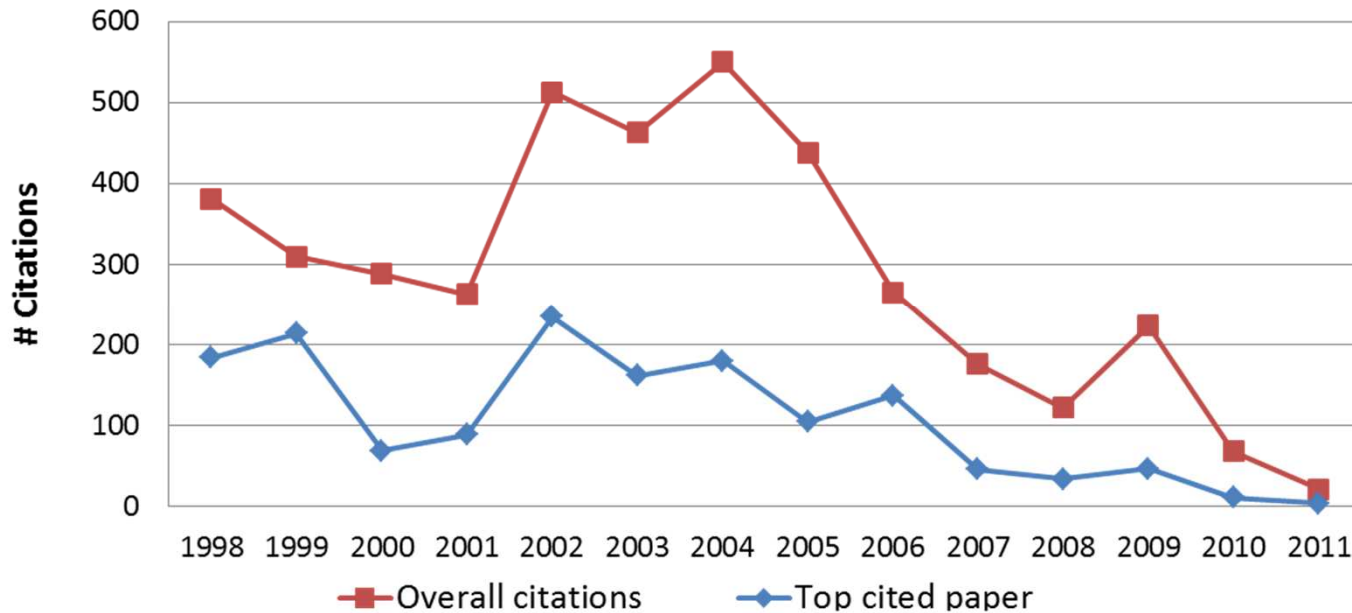
# DOLAP Trends

- High number of citations per year

1999, Tryfona, Busborg, Christiansen  
**starER: a conceptual model for data warehouse design**



↳ A very partial statistic collected from Publish or Perish





# DOLAP Trends

- Conference h-index since 2000 (by SHINE)
  - **DOLAP 31**
  - DAWAK 29
  - IDEAS 28
  - DMDW 16



# Special Issue on Information Systems

- A selection of best papers will be recommended for inclusion in a special issue Elsevier - Information Systems (IF: 1.595).
  - Invitation: December 2012
  - Submission: January 2013
- 5-7 papers will be invited
  - Both short and full papers can be selected based on:
    - Originality
    - DOLAP reviews
    - Quality of the presentation
  - **Publication is not ensured for all the selected papers**



# Program

**8:45-9:30 Invited Talk**

Kostamaa, Pekka - Teradata

*Efficient Big Data Analytics using SQL and Map-Reduce*

**9:30-10:45 Session 1: OLAP Query processing and Trends**

**10:45-11.05 Coffee break**

**11:05-13:00 Session 2: Data Warehouse Design and Maintainability**

**13:00-14:00 Lunch**

**14:00-15:45 Session 3: Performance and Benchmarking**

**15:45-16.05 Coffee break**

**16:05-17:30 Session 4: Warehousing complex data**

# The DOLAP 2012 Word Cloud

- Themes highlighted by the titles of the accepted papers are:
  - Ontologies & Reasoning
  - Benchmarking
  - Towards

